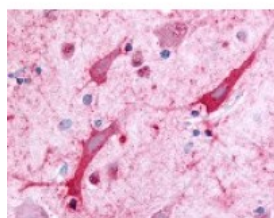




Ceramide Kinase Antibody

CATALOG NUMBER: 48-212



Immunohistochemistry staining of
Ceramide Kinase in brain cortex tissue
using Ceramide Kinase Antibody.

Specifications

SPECIES REACTIVITY:	Human
TESTED APPLICATIONS:	IHC
APPLICATIONS:	Ceramide Kinase antibody can be used in ELISA, Western Blot starting at 1:500 - 1:1000, and immunohistochemistry starting at 5 ug/mL.
USER NOTE:	Optimal dilutions for each application to be determined by the researcher.
SPECIFICITY:	BLAST analysis of the peptide immunogen showed no homology with other human proteins.
IMMUNOGEN:	Ceramide Kinase antibody was raised against a peptide located in the N-Terminal extracellular domain of Ceramide Kinase (Human).
HOST SPECIES:	Rabbit

Properties

PURIFICATION:	Immunoaffinity Chromatography
PHYSICAL STATE:	Liquid
BUFFER:	PBS, 0.1% sodium azide.
STORAGE CONDITIONS:	Ceramide Kinase antibody should be stored long term (months) at -80 °C and short term (days) at 4 °C. As with all antibodies avoid freeze/thaw cycles.
CLONALITY:	Polyclonal
CONJUGATE:	Unconjugated

Additional Info

ALTERNATE NAMES:	CERK, Acylsphingosine kinase, Ceramide kinase, DA59H18.2, DA59H18.3, KIAA1646, Lipid kinase 4, Lipid kinase LK4, HCERK, LK4
ACCESSION NO.:	Q8TCT0
PROTEIN GI NO.:	30172885
OFFICIAL SYMBOL:	CERK
GENE ID:	64781

