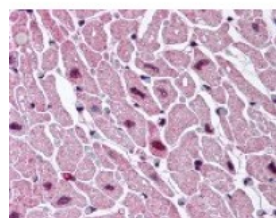




CYSLTR2 Antibody

CATALOG NUMBER: 48-154



Immunohistochemistry staining of
CYSLTR2 in heart tissue using CYSLTR2
Antibody.

Specifications

SPECIES REACTIVITY:	Gorilla, Human
TESTED APPLICATIONS:	ELISA, IHC
APPLICATIONS:	CYSLTR2 antibody can be used in immunohistochemistry starting at 20 ug/mL.
USER NOTE:	Optimal dilutions for each application to be determined by the researcher.
SPECIFICITY:	BLAST analysis of the peptide immunogen showed no homology with other human proteins, except SNX11 (55%).
IMMUNOGEN:	CYSLTR2 antibody was raised against a peptide located in the C-Terminal cytoplasmic domain of CYSLTR2 (Human).
HOST SPECIES:	Rabbit

Properties

PURIFICATION:	Immunoaffinity Chromatography
PHYSICAL STATE:	Liquid
BUFFER:	PBS, 0.1% sodium azide.
STORAGE CONDITIONS:	CYSLTR2 antibody should be stored long term (months) at -80 °C and short term (days) at 4 °C. As with all antibodies avoid freeze/thaw cycles.
CLONALITY:	Polyclonal
CONJUGATE:	Unconjugated

Additional Info

ALTERNATE NAMES:	CYSLTR2, CysLT(2), CYSLT2, CYSLT2R, CysLT-2, HG57, HGPCR21, KPG_011, PSEC0146, HPN321
ACCESSION NO.:	Q9NS75
PROTEIN GI NO.:	20138034
OFFICIAL SYMBOL:	CYSLTR2
GENE ID:	57105

Background

BACKGROUND: Cysteinyl leukotriene receptor 2 (CysLT₂) is a Chemoattractant Receptor that binds neutrophil chemoattractants such as cysteinyl leukotrienes. These ligands have potent proinflammatory activity and are implicated in many features of asthma including edema, bronchial constriction, and hyperreactivity (Bisgaard et al., 2000). Activation of cysteinyl leukotriene receptor 2 induces cell contraction and/or relaxation.

FOR RESEARCH USE ONLY

December 13, 2016